

# A villa in the heart of Empordà



## DETAILS

Reference	THSTESGER0003
Price	2.400.000€
Built area	782 sqm
Bedrooms	7
Bathrooms	7
Location	Parlabá
Local property tax	973€
Condominium fee	Not specified
Plot area	2000 sqm
Estate area	2.5 ha

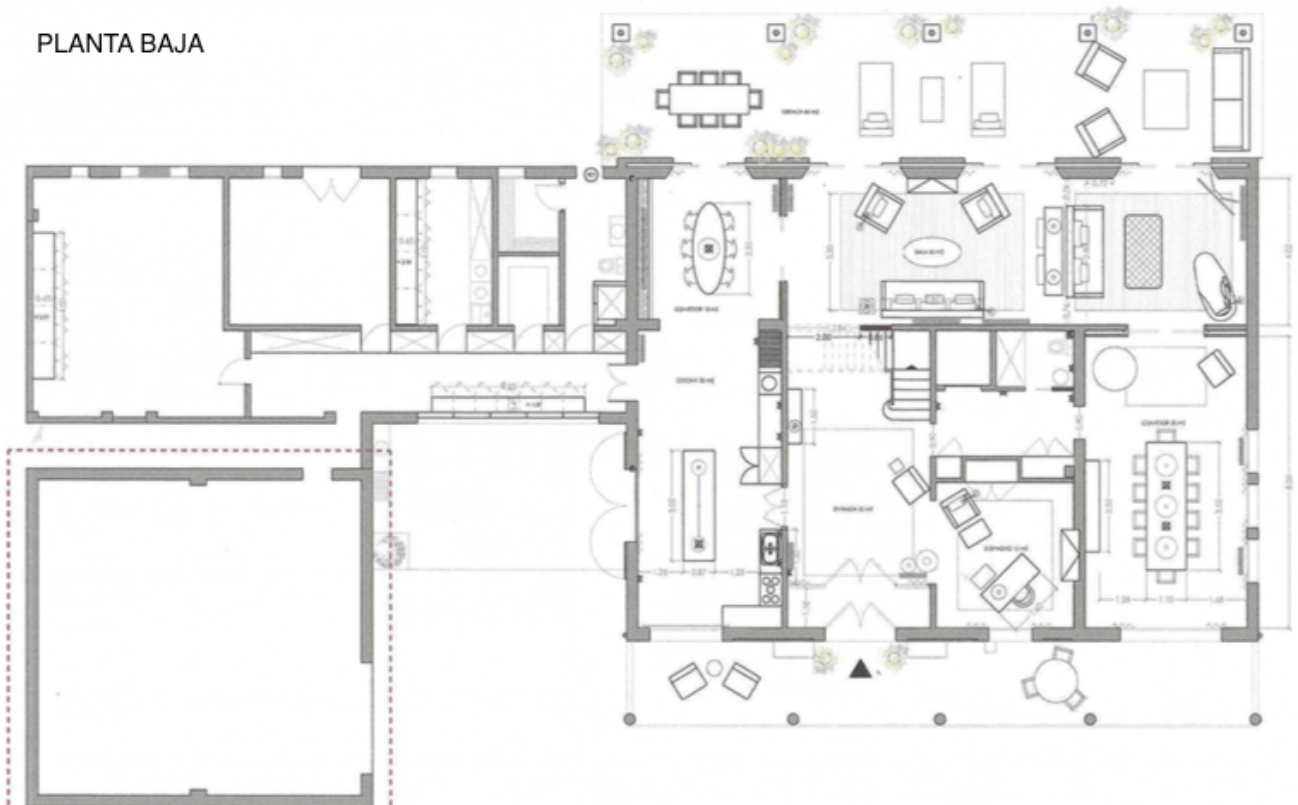
## ATTRIBUTES

Air conditioning
Furnished
Garage
Garden
Height of more than three metres
Individual heating
Porch
Swimming pool
Wireless Internet (Wi-Fi)

**THE SIBARIST**

Contact us: +34 91 308 40 50 | [info@thesibarist.com](mailto:info@thesibarist.com)

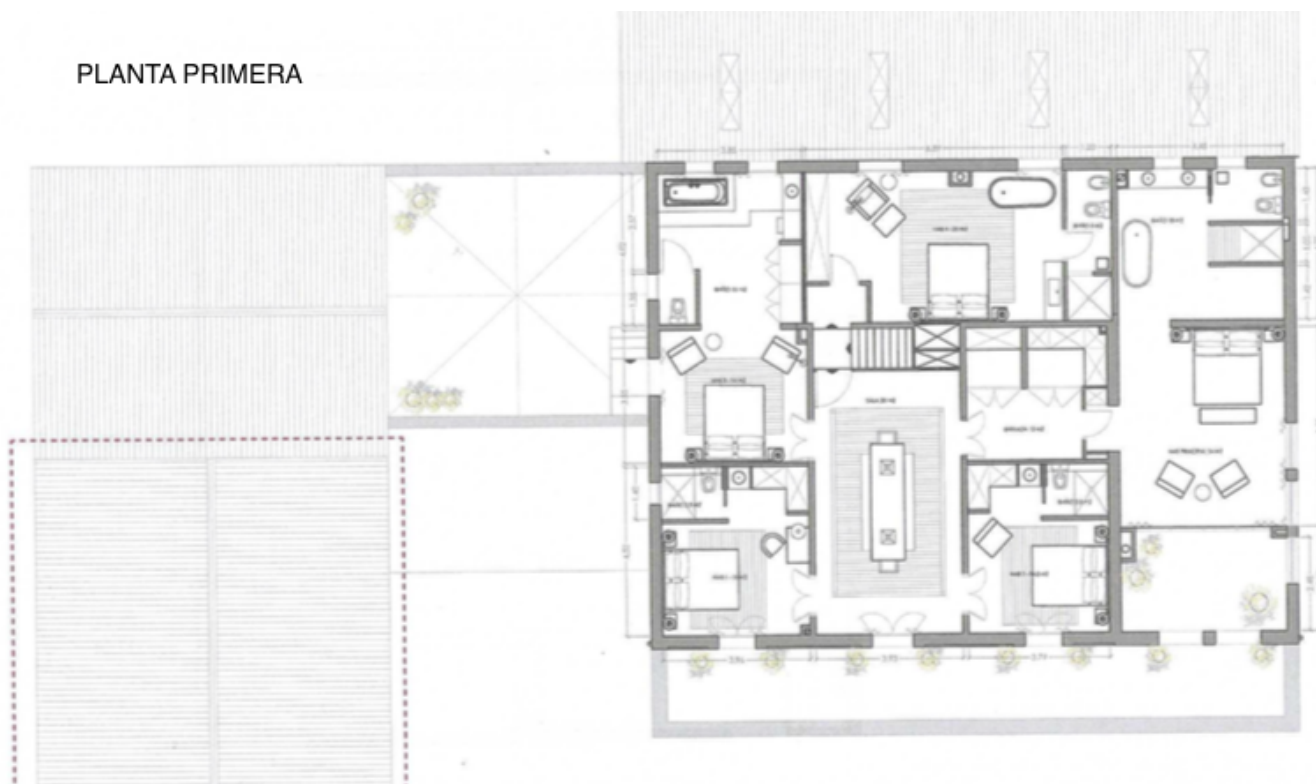
## PLANTA BAJA



# THE SIBARIST

Contact us: +34 91 308 40 50 | [info@thesibarist.com](mailto:info@thesibarist.com)

## PLANTA PRIMERA



# THE SIBARIST

Contact us: +34 91 308 40 50 | [info@thesibarist.com](mailto:info@thesibarist.com)